

ReQuest Interface Guide #4A

**Using the AMX Landmark™ Interface**



**AUDIOREQUEST  
INTEGRATION PARTNERSHIP**



Version: 2.1.0  
Last Modified:  
03/04/03 – Added 1.8.1 commands  
11/05/02 – Initial Version

## Introduction:

Working closely with AMX we have developed a totally new interface for integrating AudioReQuest with an AMX Landmark Control System. With a brand new ZOOM module, new Touch Panel graphics, and a sample project, it is now easier than ever to create a complete home audio solution. All of these files are available for download at [www.request.com](http://www.request.com). Click on "Support" in the top link bar, then "AMX" on the left under Integration.



In order to take full advantage of all of the features contained in the sample project, AudioReQuest software version 1.8.1 or higher is required. You may update your AudioReQuest unit online or obtain an update CD by contacting ReQuest Multimedia at (800) 236-2812.

## Getting Started:

**\*\*If you are updating an existing program, it is important that you back up your program first before updating the ZOOM module. See *Backing Up Your Program* below for more information**

1. Download the following files from [www.request.com](http://www.request.com):
  - a. ZOOM module ([ARQConnect AMX ZOOM v1\\_3\\_3.zip](#))
  - b. Touch Panel files  
([ARQConnect AMX Landmark CV10 v2\\_1\\_0.zip](#))
  - c. Sample project  
([ARQConnect AMX Landmark Single Zone v2\\_1\\_0.zip](#))
2. Unzip each of the archives.
3. Install the new ZOOM module by double clicking on ***Request ARQx-Pro rev133.exe***.
4. Run TPDesign. If you only plan to use the DMS keypad solution included with the project, you may skip to step 7.
5. Open the Touch Panel Designer file you unzipped ([ARQConnect\\_AMX\\_Landmark\\_CV10\\_v2\\_1\\_0](#)).
6. Download the Touch Panel file to your Touch Panel. If you do not plan to utilize the Album Art interface, see ***Removing Cover Art from the Panel*** below.
  - a. We have found that selecting the following bitmaps during the optimization process produces the best overall display:

SelectBar2.bmp	ToggleLight.bmp
Pause2 glow.bmp	ReQuestLogo.bmp
TallButton2.bmp	

7. Open Landmark Designer. It is recommended that you run the most recent version of Landmark Designer software. Visit [www.amx.com](http://www.amx.com) for more information on updating your software.
8. Synchronize the ZOOM files by going to **File**→**Synchronize ZOOM's**
9. Open the project file you unzipped (*ARQConnect\_AMX\_Landmark\_Single\_Zone\_v2\_1\_0*).

### **AlbumArt™ with Video-enabled AMX Panels:**

With ARQ OS v1.8.1, ReQuest introduces the ability to add AlbumArt to the ARQ. The new ARQConnect 2.1.0 panels have been designed to display this cover art using the video input on enabled AMX touchpanels.

**In order to use AlbumArt, a new theme MUST be installed on EVERY AudioReQuest!** This theme is zipped into a file named *AlbumArtLarge.zip* and is included with the AMX demo program you downloaded (*ARQConnect\_AMX\_Landmark\_Single\_Zone\_v2\_1\_0.zip*). When you unzip the archive, *AlbumArtLarge.zip* is placed in the same folder as the AMX project. To install this theme on an AudioReQuest, follow these steps:

1. Unzip *AlbumArtLarge.zip* into its own folder on your computer.
2. Connect the AudioReQuest to your local network if it is not already. This process can **not** be done remotely over the internet. For help connecting your AudioReQuest to the network, see *AudioReQuest Network Guide 1*, found under Network Guides in the Support section of our website.
3. Open a web browser and enter [\\ARQ-IP-Address\Themes](http://\ARQ-IP-Address\Themes) into the address bar, where *ARQ-IP-Address* is the IP Address of your AudioReQuest. If you do not know the IP address of your AudioReQuest, you may enter the ARQ Name. Both of these can be found by going to **Menu**→**Settings**→**Network Configuration** on the AudioReQuest.
4. Copy the four (4) theme files you unzipped into the Themes folder on the ARQ  

<i>N2AlbumArtLarge.dat</i>	<i>P2AlbumArtLarge.dat</i>
<i>N2AlbumArtLarge.raw</i>	<i>P2AlbumArtLarge.raw</i>
5. Press **Alt + 7** on the AudioReQuest remote control to scroll through the themes. Continue pressing **Alt + 7** until you see **Loading AlbumArtLarge** on the TV or Monitor. No reboot is necessary.

**NOTE:** If you do not have a TV or Monitor connected to the AudioReQuest, you can use the video input to the AMX panel. The *AlbumArtLarge* theme has the same size image on both the Browse and Player screens, whereas the default AlbumArt theme has a smaller picture on the Browse page.

## Removing Cover Art from the Panel

If your touch panel does not have a video input, or if you choose not to use the cover art interface, the following steps describe how to remove the video from the panels.

1. Open the *ARQConnect\_AMX\_Landmark\_CV10\_v2\_1\_0.tpd* file contained in the archive you downloaded.
2. Open the Player page.
3. Select the blue square in the upper right corner (**Figure 1**).
4. Press the Delete key on your keyboard. You will notice that an image appears that is similar to the one shown in **Figure 2**.
5. Repeat the above steps for the Browse page.
6. Save and upload the panel



Figure 1



Figure 2

## Dual DMS Interface:

Due to popular demand, ReQuest proudly announces the release of a totally new DMS keypad interface. Providing your DMS keypad is version 5.15 or higher (contact AMX for an upgrade if necessary), you can now browse for Artists, Albums, Genres, or User Playlists. The DMS keypad in the sample project labeled "*Browse DMS Keypad*" utilizes this new interface. If you have an older DMS keypad and do not wish to upgrade or if you wish to use a simpler interface, the "*ReQuest DMS Keypad*" included in the sample project is similar to our previous design and does not include browsing capability.

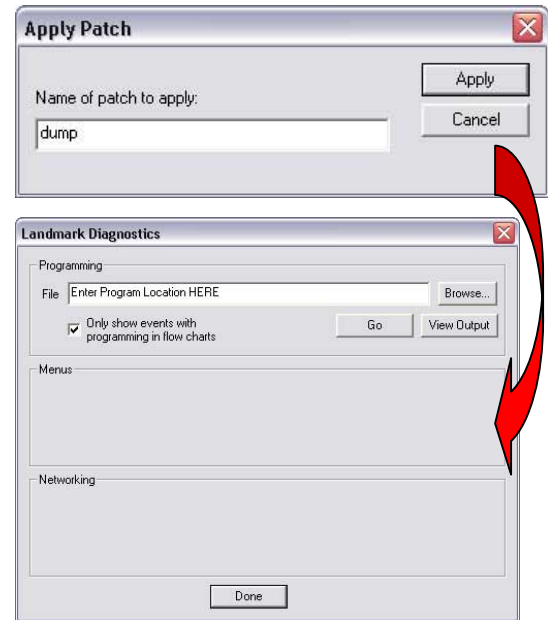
To select the keypad you wish to use, simply go to the **Network** page, select the appropriate keypad, and click **Identify**. By default, the "*Browse DMS Keypad*" is attached, so you may need to select it and click **Unattach** before adding the "*ReQuest DMS Keypad*".

## Backing Up Your Program:

Due to an issue with the Landmark Designer software, certain parts of your project may become corrupt after synchronizing a new ZOOM. AMX is aware of the issue and is working on a fix for it. Until a fix is available, it is important that you back up your program as well as print a hard copy of the programming structure so that you may rebuild it if it becomes necessary. To print a hard copy of your program, follow the steps found on the next page.

1. Select **Patches** from the **File** pull-down menu.
2. Type **dump** in the dialog box that opens and click **Apply**.
3. In the window that opens, enter a name for the file.
4. Select a file location by clicking **Browse**.
5. Click **Go** to create the file.
6. When finished, click **Done**.

Now that you have a hard copy of your program, it is safe to update the ZOOM module. If a problem arises, rebuild your program using this file.



### Warning:

If you purchased a SAM Module (*PMBSAM REQUEST [PFG636-63]*) before February 13, 2002, you may experience a loss of connectivity. Please contact AMX if you experience any problems with these parts.

If you are using a DMS keypad, make sure that the firmware version of your keypad is 5.15 or higher. If it is not, please contact AMX for an upgrade.

### Support:

For technical questions on using the Touch Panel files or the sample project, please contact ReQuest Multimedia at (800) 236-2812 or on the web at [www.request.com](http://www.request.com).

For technical support regarding AMX hardware or software, please contact AMX Technical Support at (800) 932-6993 or visit them on the web at <http://www.amxcorp.com/techsupport>

## Complete List of Landmark Commands

Power	Turn unit On/Off
Mode	Toggles between navigator view and player view
Menu	Displays the menu to change setting
Play	Discrete play command
Stop	Stops the music currently playing
Pause	Pause/unpause the music currently playing (ON, OFF, TOGGLE)
Record	Begins the recording process
Shuffle	Randomizes the order of the current Playlist (ON, OFF, TOGGLE)
Repeat	Repeats the current playlist (ON, OFF, TOGGLE)
Cancel	Cancels the current operation
Select	Selects the song or playlist where the cursor is
Deselect	Deselects all selected songs on the AudioReQuest
Previous/Up	Plays the previous song in Player, moves cursor up in Browse
Forward/Right	Fast forwards the current song in Player, moves cursor right in Browse
Next/Down	Plays the next song in Player, moves cursor down in Browse
Rewind/Left	Rewinds the current song in Player, moves cursor left in Browse
Previous Song	Discrete Previous Song command
Next Song	Discrete Next Song command
Fast Forward	Discrete Fast Forward command
Rewind	Discrete Rewind Command
Enter	Enter on Browse page, Play/Pause on Player page (mimics IR remote)
Volume	Increases or decreases the volume
Jump Up	Page up
Jump Down	Page down
CD	Quick jump to the CD playlist
All	Quick jump to the ALL SONGS playlist
Artist	Quick jump to the ARTIST playlist
Album	Quick jump to the ALBUM playlist
Now Playing	Quick jump to the NOW PLAYING playlist
Number Pad	Number pad (0-9)
Alpha(Lowercase) Pad	Lowercase letters
Alpha(Uppercase) Pad	Uppercase letters
Alpha(Characters) Pad	Characters
Shift	Shift command
Space	Enter space
BackSpace	Enter a backspace
Alt	Alt command
Visuals	Enters visuals mode and switches between visuals
Themes	Switches between themes
EQ	Not yet supported
Info	Display all information on song, artist, or album
Intro	Activates the intro function
Search	Enters extended search mode
Delete	Deletes selected item
Copy	Copies selected song into playlist
Sort	Not currently supported
Jukebox	Adds highlighted item into jukebox queue
Edit	Edits highlighted item
Help	Not yet supported
Random Out	Exits Random Play mode
Random In	Enters Random Play mode
Eject	Open CD tray

Jump To Genres	Quick jump to the Genre playlist
Next Genre	Select next genre
Previous Genre	Select previous genre
GUI Feedback Data On	Turns GUI (8-line) feedback ON
GUI Feedback Data Off	Turns GUI (8-line) feedback OFF
LCD Feedback Data On	Turns LCD (4-line) feedback ON
LCD Feedback Data Off	Turns LCD (4-line) feedback OFF
Player Data Always On	Turns player data on
Player Data Always Off	Turns player data off
Time Updates On	Enable elapsed time updates
Time Updates Off	Disable elapsed time updates
Jump To Position	Move cursor to position X without navigating and then send enter
Move To Position	Move cursor to position X without navigating
Show Playlists	Show all playlists
Show Selected Songs	Show all selected songs
Clear Now Playing	Clears everything in Now Playing
Restart TV Out	Re-initializes the TV Out card
Record No Edit	Starts recording whatever CD is in the CD tray
Auto Rip On	Turns Auto Rip on
Auto Rip Off	Turns Auto Rip off
Play Playlist	Play playlist 1-10
Next Playlist	Start playing the next playlist
Previous Playlist	Start playing the previous playlist
Create Empty Playlist	Creates an empty user playlist
Create Playlist from Now Playing	Creates a user playlist from the Now Playing queue
Create Playlist from Selected	Creates a user playlist from Selected Songs
Direct Play User Playlist w/o Flip	Jump to user playlist (1-255) w/o page flip
Direct Play User Playlist w/Flip	Jump to user playlist (1-255) with page flip
Go To Navigator	Go to navigator page
Go To Player	Go to player page
Play Now	Plays song(s) under currently highlighted item. Flips to Player
Play Now No Flip	Plays song(s) under currently highlighted item. Stays in Navigator
Next Artist	Begins playing songs under the next artist in the list
Prev Artist	Begins playing songs under the previous artist in the list
Next Album	Begins playing songs under the next album in the list
Prev Album	Begins playing songs under the previous album in the list
Discrete Contin. On	Discrete command to turn Continuous mode ON
Continuous Toggle	Toggle Continuous mode On/Off
Repeat/Contin. Off Toggle	Toggles between Repeat, Continuous, or neither (different from Repeat)