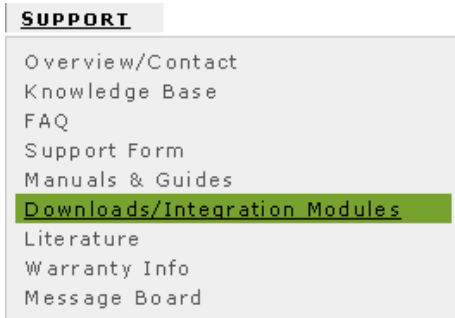
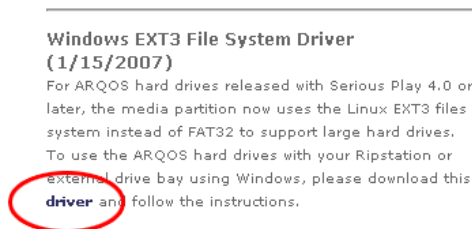


How to install and use the Ext3 driver to access an AudioReQuest Hard Drive media partition in a RipStation

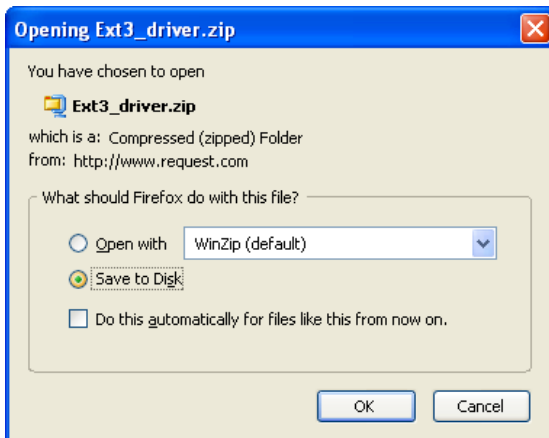
1. Go to www.ReQuest.com to download the required files for installation. Float over **Support** then choose **Downloads/Integration Modules**



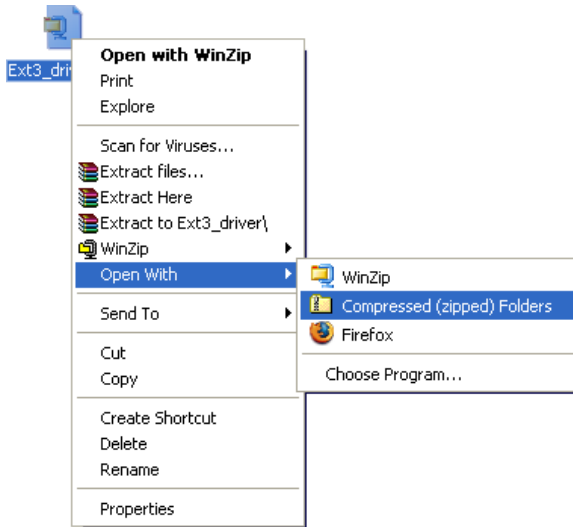
2. On the downloads page, click the word **Driver** in the Ext3 description field



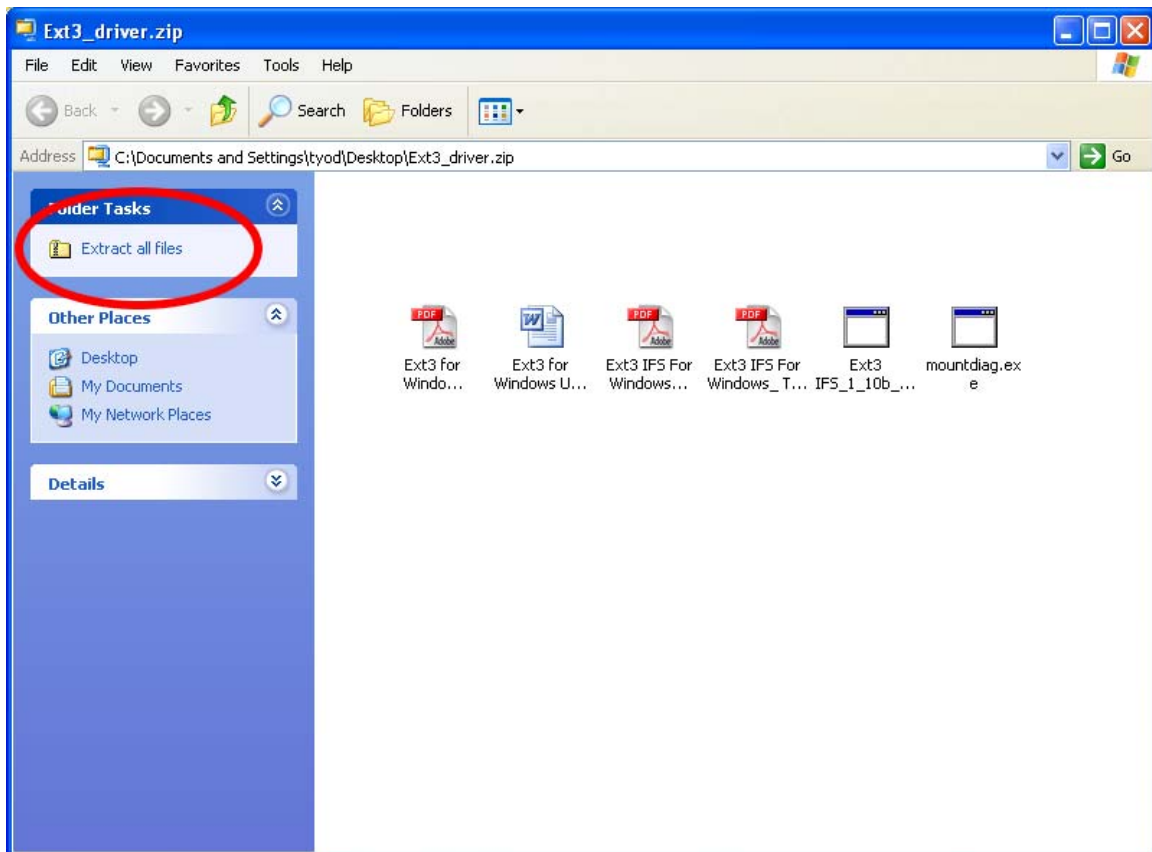
3. When prompted to open or save the file, save it on your hard drive.



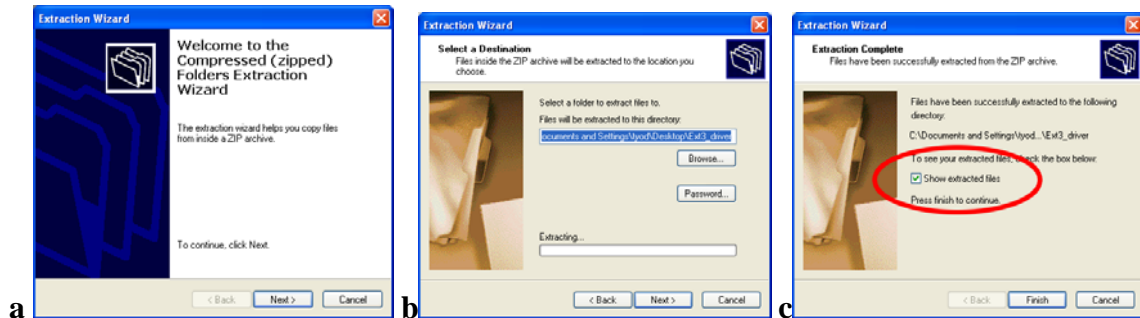
4. Go to the folder on your hard drive where you saved the file and right-click on it. Choose **Open With** and select the option **Compressed (zipped) Folders**



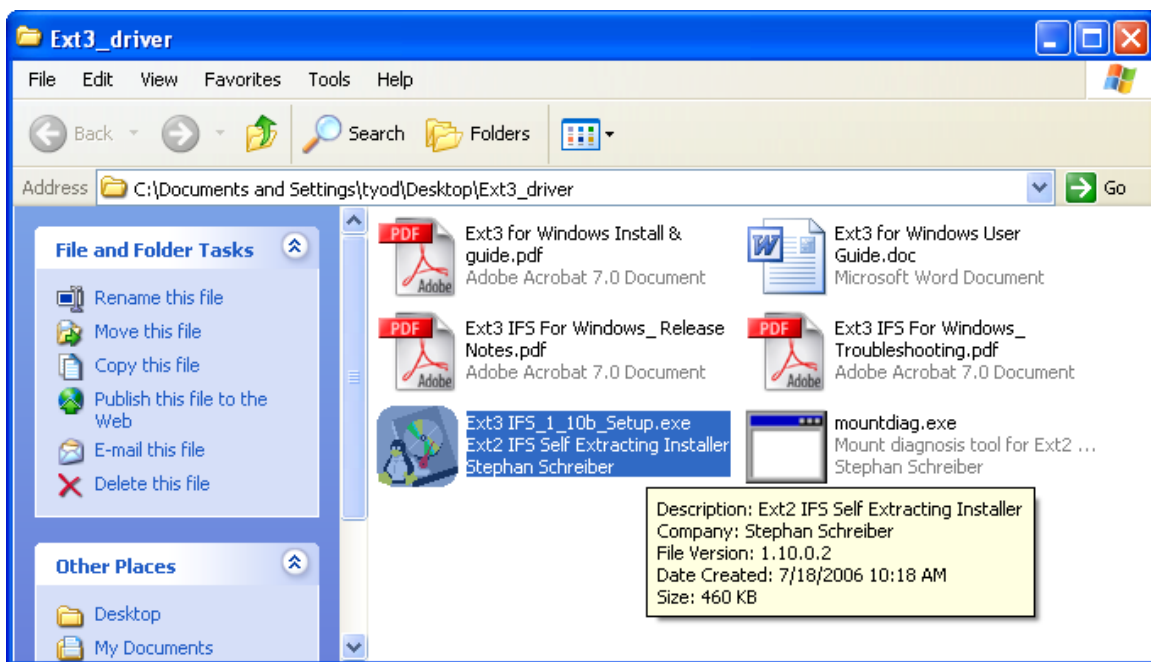
5. With the Compressed Folder open, select Extract All Files in the upper left corner



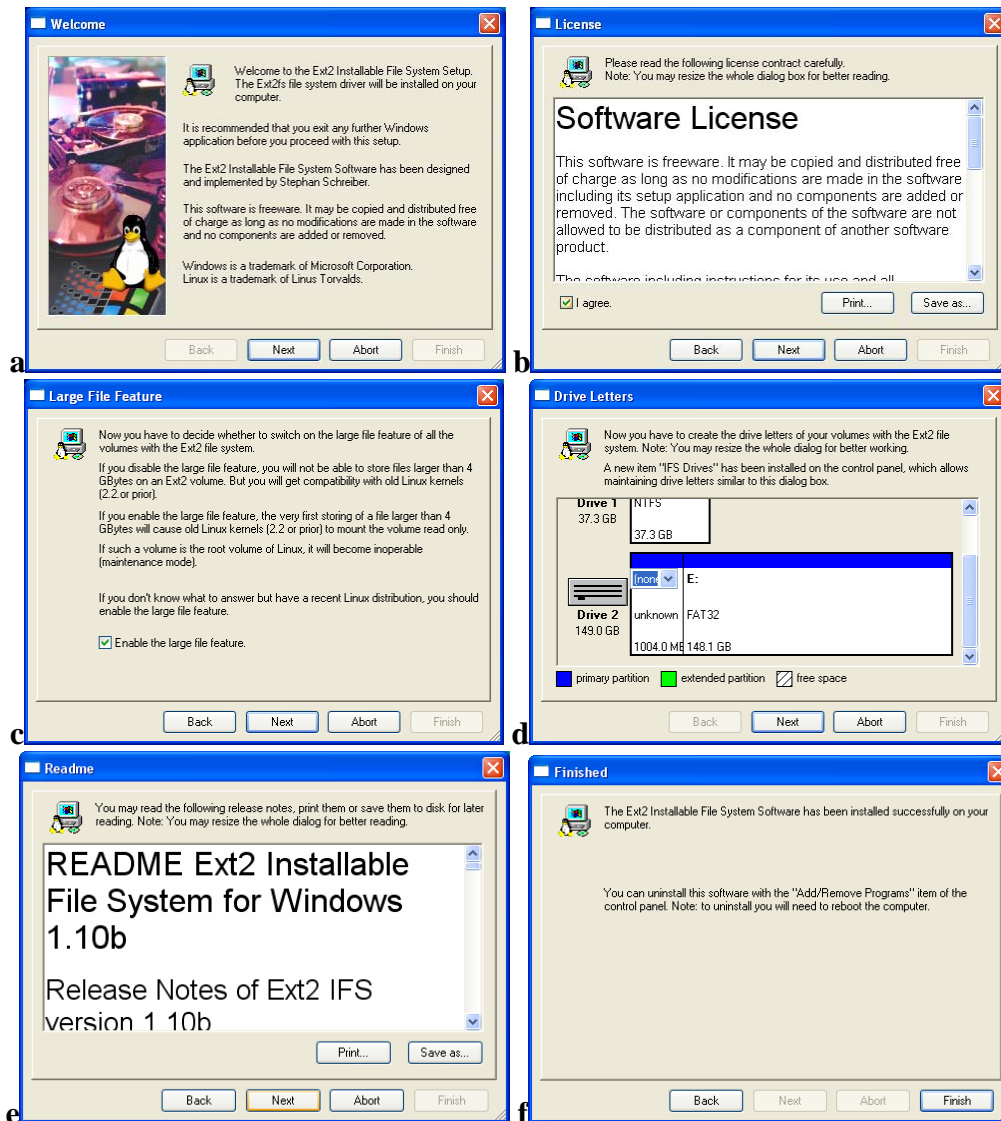
6. Use the Windows Extraction Wizard
 - a. Click Next at the first screen.
 - b. Specify the folder on your hard drive to uncompress the files
 - c. Once the files are extracted, verify the **Show Extracted Files** option is checked and click **Finish**.



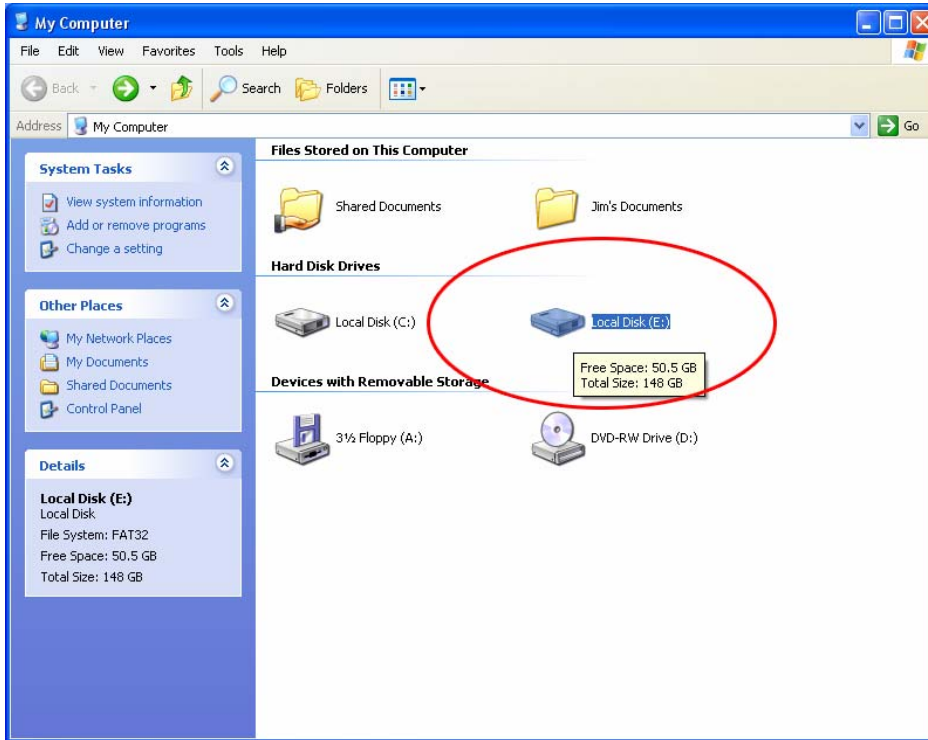
7. Now that the files from Ext3_driver.zip are uncompressed, double-click on **Ext2IFS_1_10b_Setup.exe**



8. Running the Ext3 driver install program
 - a. At the Welcome screen, click **Next** to begin
 - b. At the License screen, check **I Agree** and hit **Next**
 - c. At the Large File Feature screen, verify **Enable large file feature** is checked and hit **Next**
 - d. At the Drive Letters screen, select the media partition of the AudioReQuest hard drive and give it a drive letter and select **Next**. The media partition is *always* the third partition listed. **IMPORTANT: DO NOT EVER ASSIGN A DRIVE LETTER TO THE SYSTEM PARTITION OR THE SWAP PARTITION!**
 - e. Read the Readme section to better understand the Ext3 driver setup and operation, click **Next**
 - f. You're finished, click **Finish**



9. With the driver installed, you can access the AudioReQuest hard drive media partition like a regular drive in Windows.



10. Changing the drive letter after installation

- a. Insert the drive in to the RipStation whilst the RipStation is powered OFF
- b. Power on and log into Windows
- c. Open the Control Panel
- d. Open the **IFS Drives** item
- e. Change the drive letter for the ReQuest OS Drive. NOTE: The media partition will always be the third partition. **DO NOT EVER ASSIGN A DRIVE LETTER TO THE SYSTEM PARTITION OR THE SWAP PARTITION!!!**

Additional Notes

The windows Ext3 driver will not operate with a drive that was not properly “un-mounted”. situation is noticed when you try to access a media partition and the system asks you to format the partition (always click no). The solution to this problem is to power off the Rip Station, put the drive into a working power up the ARQ, and then shut it down properly—by pressing the power button once, unit as booted fully, and then waiting for it to shutdown. You can then place the drive the Rip Station and try the process over again. If the problem persists, there is a diagnostic utility included within the zip file that you will asked to run. Running “mountdiag.exe h:” (where h: is the drive letter you assigned the partition) will give valuable diagnostic information that will greatly aid any support call if resolve the problem.

Driver updates & additional documentation can be found at <http://www.fs-driver.org/>