

# Installation



**Windows PC**  
Requires XP, Vista, Win 7, 30MB free HD space and 1GB RAM.

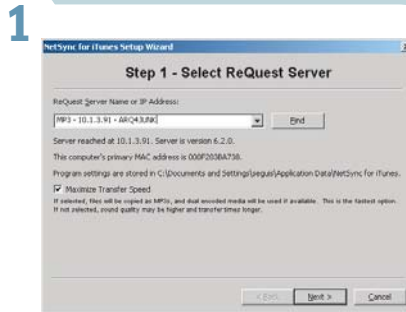
Download the "exe" file and then double-click to run the installer. Check "Launch NetSync for iTunes" as the last step of the install to run the program from your start menu.



**Mac OS X**  
Requires OS X 10.5+ (Leopard or Snow Leopard), 60MB free HD space, and 1GB RAM.

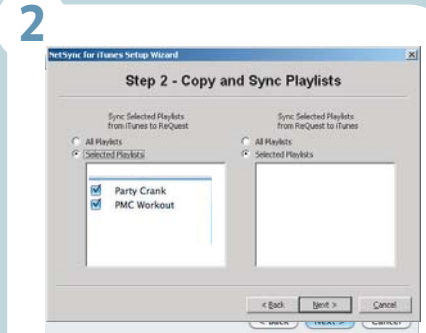
Download the "dmg" file and run the installer.

Open the Applications directory and double-click on NetSync for iTunes program.



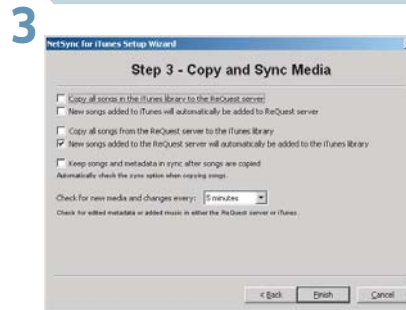
If there is only one ReQuest server on the network, the program will automatically find it and fill in the information. With multiple servers, you have a pull down list to pick from.

Select "Maximize Transfer Speed" and NSFIT2 will only transfer mp3 versions of your music, reducing network usage.



Select the playlists from your iTunes and ReQuest server libraries that you would like to keep in sync.

Once the playlists are selected, changes made on either system will be automatically updated in both libraries.

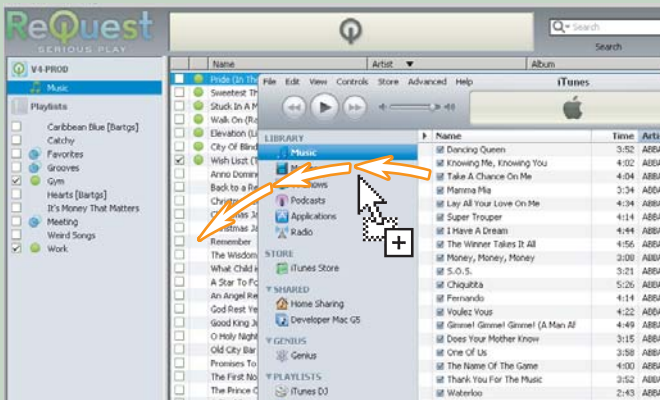


The final window shows the options of copy and syncing media. The default configuration is set to copy all your iTunes songs to the ReQuest server, add new songs from iTunes to the server and add new server songs to iTunes. You can change any of these settings as well as sync metadata and set the sync interval.

Click Finish and NSFIT2 is ready to go. Media will begin copying immediately and will stay in sync automatically.

## Basic Use of NetSync for iTunes 2

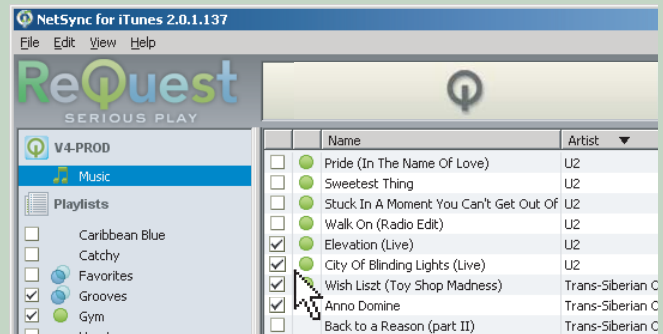
### To Sync from iTunes to ReQuest...



Playlists and songs that are not already set to sync can be added to the ReQuest server from iTunes by simply dragging them from the iTunes window to the correct spot in the NetSync for iTunes window.

Drag songs, artists, albums, etc. to the media list area of NSFIT2 or drag playlists from iTunes to the NSFIT2 playlist area.

### To Sync from ReQuest to iTunes...



Songs or playlists on the ReQuest server that are out of sync or are only on the ReQuest server and not yet in iTunes (no icon) can be set to sync with iTunes by clicking the checkbox. Once checked, you will see an animated icon (blue circle) to let you know the song or playlist is transferring. Once complete, you will see the "In Sync" icon (green circle) which lets you know that NetSync for iTunes is now monitoring this song for changes in both libraries. Sync problems will be indicated with a warning icon (yellow triangle) which will display further information when hovered over with the mouse.

Visit [www.ReQuest.com/support/nsfit](http://www.ReQuest.com/support/nsfit) for more on NetSync for iTunes 2